

YeastZYME

PRODUCT INFORMATION



WHAT IS YEASTZYME?

YeastZYME is a scientifically formulated multi enzyme product that helps to destroy the cell wall of Candida and yeast.

HOW IT WORKS

YeastZYME works to destroy Candida and yeast cells by breaking down their cell wall, while at the same time, breaking down sugar and carbohydrates which Candida and yeast use as nourishment. Unlike human cells, Candida and yeast cell walls are rigid, which makes them more difficult to destroy. Candida Albicans cell walls are composed primarily of the following polysaccharides; Beta-Glucan, Mannans, and Chitin. Chitin is resistant to microbial degradation (Medical sutures are made of Chitin because of their strength and flexibility). In addition to primary compounds, yeast cells may also contain cellulose lipids, proteins and even some minerals.

YeastZYME destroys the natural defence of the yeast cell; its hard protective outer coating. Meanwhile, the multi enzyme formula in YeastZYME works to break down nutrients (such as sugars and carbohydrates) that feed Candida and yeast cells. This ensures that the yeast is weakened and can be more easily destroyed.

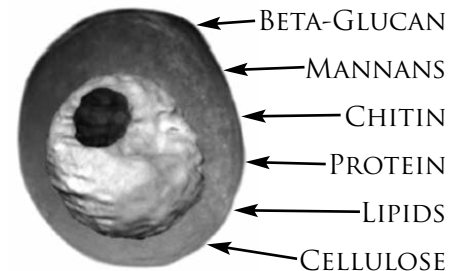
DIRECTIONS FOR USE

Take 3 capsules daily before bed at least 2 hours after meals. YeastZYME should be taken as part of a Candida cleansing program (Candida Therapy) but can be taken on its own as a preventative measure against the recurrence of Candida and yeast overgrowth.

Note: It can also be used in conjunction with probiotics (Ultimate FloraMAX) for Candida patients who are unable to take anti-Candida herbs. Although this will not be as effective as taking anti-Candida herbs, it can be helpful.

WHAT TO EXPECT

YeastZYME works to degrade the cell wall of Candida and yeast. This allows the anti-fungal herbs that are contained within a Candida cleansing program (such as Candida Therapy) to destroy and eliminate a greater quantity of these cells, thereby greatly reducing or eliminating the underlying cause of Candida and yeast overgrowth.



CANDIDA ALBICANS

SUPPORT PRODUCTS

It is strongly suggested that Candida Therapy is taken along with YeastZYME to ensure Candida is destroyed

Candida Therapy: is a 15 day broad spectrum antifungal and antibacterial herbal cleanse. It is specifically formulated to eradicate yeast / Candida and microbial type organisms from the body. In the case of chronic or severe Candida, it is recommended to use this program for 30 days.

Ultimate FloraMAX: Probiotics are 'friendly' bacteria which help to ensure a healthy balance between 'good' and 'bad' bacteria in the intestinal tract. Ultimate FloraMAX's 50 Billion culture formula contains therapeutic amounts of Lactobacilli and Bifidobacteria to help create a balanced intestinal environment in both the small and large intestine.

FibreMAX: It is important when cleansing to ensure that fibre intake is at an optimal level (30-40 grams). Fibre absorbs Candida and their toxins so they can be eliminated through the colon.

INGREDIENTS

YEASTZYME

Enzymes which break down yeast cells:

Cellulase

- ◆ breaks down cellulose

Lipase

- ◆ breaks down lipids (fats)

Hemicellulase

- ◆ breaks down cellulose

Protease

- ◆ breaks down protein

Lysozyme

- ◆ breaks down chitin

Enzymes which break down the glucose containing portion of the yeast cell wall, as well as the sugars which feed Candida:

Amylase

- ◆ breaks down starches

Lactase

- ◆ breaks down lactose

Glucoamylase

- ◆ breaks down starches

Malt Diastase

- ◆ breaks down starches

Invertase

- ◆ breaks down sugars

YeastZYME - Each tablet contains

YeastZYME Enzyme Blend	630mg
Protease 100,000 HUT	
Cellulase 37,500 CU	
HemiCellulase 15,000 HCU	
Lysozyme 7,500 mcg	
Amylase 6,000 DU	
Invertase 115 INVU	
Lactase 250 ALU	
Malt Diastase 125 DP	
Lipase 500 LU	
Glucoamylase 50 AG	

Other Ingredients: Vegetable Capsules

Excipients: None

Contains no dairy, wheat, gluten, soy, corn, yeast, animal products, additives or preservatives.

Warning: Do not use if pregnant, nursing, or after recent surgery. Do not use if you have a peptic ulcer. Do not exceed recommended dose. Keep out of reach of children.

REFERENCES

- Lee, E.O., Kim, J.D. (1995). Palmitoyl lysozyme-induced stabilization of PE (phosphatidylethanolamine) liposomes, and their interaction of Candida albicans. *Journal of Biochemistry (Tokyo)* Jan;117(1):54-8.
- Marquis, G., Garzon, S., Strykowski, H., Auger, P., Benhamou, N. (1993). Muramidase-mediated damage to Candida yeast cells. Histochemical and immunochemical characterization of accumulating wall-like material. *J Submicrose Cytol Pathol* Jul;25(3):347-55.
- Spreghini, E., Davis, D.A., Subaran, R., Kim, M., Mitchell, A.P.(2003) Roles of Candida Albicans Dfg5p and Dew1p Cell Surface Proteins in Growth and Hypha Formation. *Eukaryotic Cell* Aug;2(4):746-755.
- Meron-Biopolymers Why Chitin: Current Applications of Chitin and Chitosan. <http://www.meronbiopolymers.com/html/mbio2apln.htm> 08/09/2005.
- McGinnis, Michael R., Tying Stephen K., Introduction to Mycology. <http://gsbs.utmb.edu/microbook/intomyco.htm> 09/08/2005.

WANT MORE INFORMATION ABOUT
CANDIDA / YEAST?
VISIT US ONLINE AT
WWW.ADVANCEDNATURALS.CA

QUALITY ASSURED - ADVANCED NATURALS
8-1273 NORTH SERVICE ROAD EAST, OAKVILLE, ON, L6H 1A7
QUESTIONS? PLEASE CALL 1-800-485-0960
WWW.ADVANCEDNATURALS.CA

092910